



MONTHLY MEMBERSHIP PROGRESS REPORT

District 132

Results as of: 2/28/2017

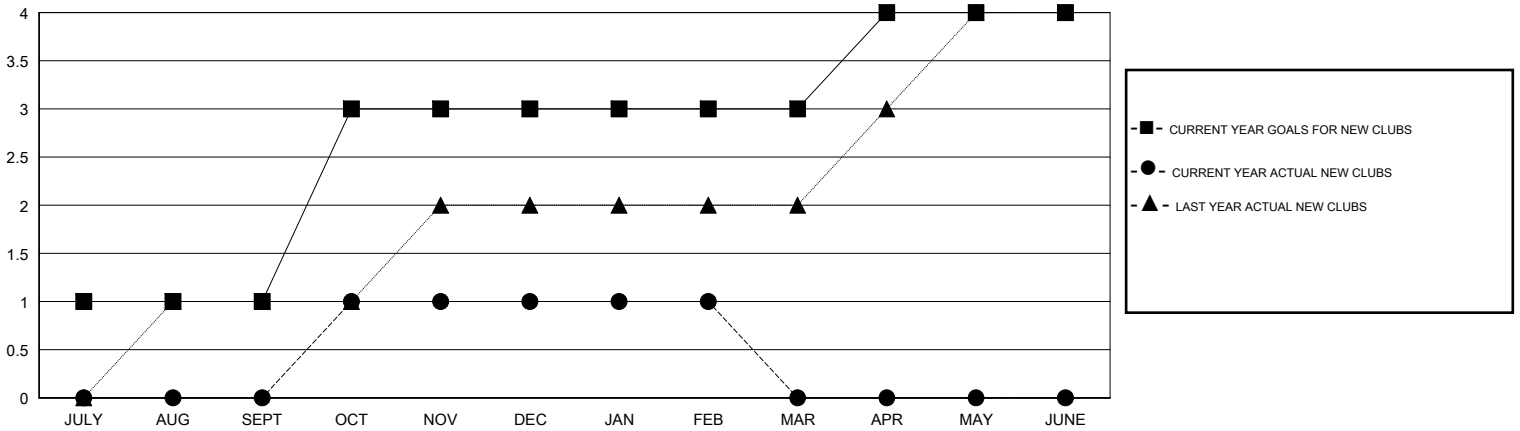
GMT: MIKLOS HORVATH

LOCATION MACEDONIA (FYROM)

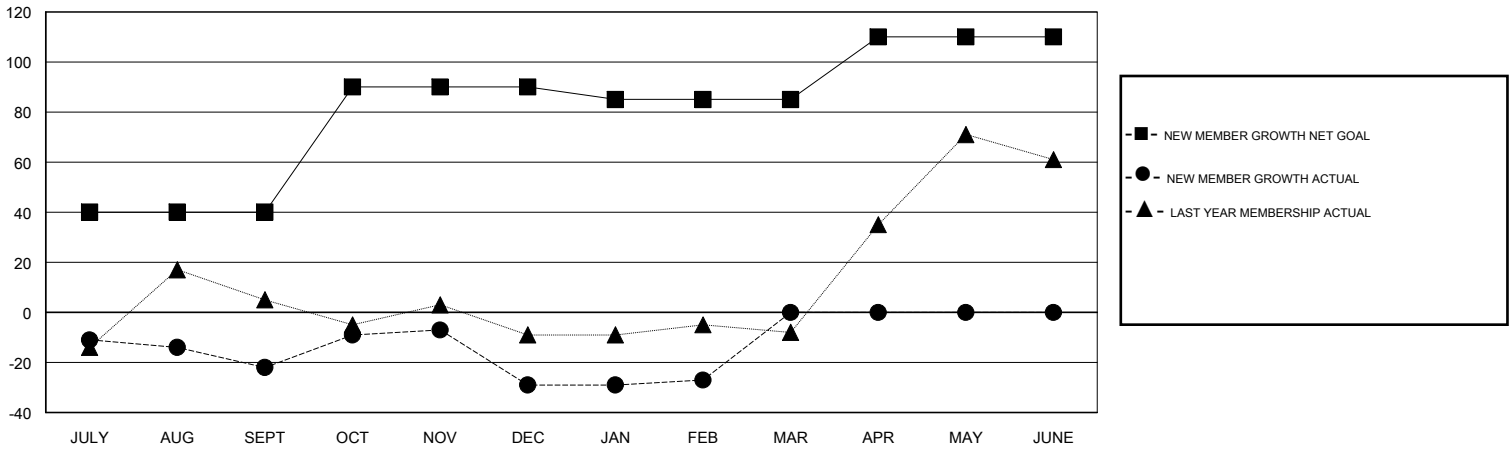
GMT CA

Clubs				Members			
RESULTS FOR 2016-2017				RESULTS FOR 2016-2017			
QUARTER	NEW CLUB GOAL	NEW CLUBS	DROPPED CLUBS	QUARTER	NEW MEMBER GROWTH NET GOAL (not reinstated or transfers)	NEW MEMBER GROWTH ACTUAL (not reinstated or transfers)	DROPPED MEMBERS ACTUAL (including transfers)
JULY/AUG/SEPT	1	0	0	JULY/AUG/SEPT	40	3	25
OCT/NOV/DEC	2	1	1	OCT/NOV/DEC	50	47	54
JAN/FEB/MAR	0	0	0	JAN/FEB/MAR	-5	22	20
APR/MAY/JUNE	1	0	0	APR/MAY/JUNE	25	0	0

GOALS AND ACTUAL NEW CLUBS CUMULATIVE



GOALS AND ACTUAL MEMBERS CUMULATIVE



DROPPED CLUBS: 1	18 CLUBS OF 38 ADDED 1 OR MORE NEW MEMBERS	GENDER DISTRIBUTION
		MALE 455 (56.31%)
		FEMALE 353 (43.69%)
DROPPED MEMBERS	CLICK HERE FOR CUMULATIVE MEMBERSHIP DATA	TOTAL FAMILY UNIT MEMBERS 83
DECEASED 0		FAMILY MEMBERS PAYING HALF DUES 42
CLUB CANCELLED 5		
OTHER 94		
TOTAL 99		